



HILL CLEMENTS
SUCCESSFULLY SELLING SINCE 1991



PRICE GUIDE

£1,195,000

3 White House Mews, Woking Road

Jacob's Well, GU4 7GD

A three-storey attached town house, built five years ago to an exacting standard by local builders in a private gated mews of only three houses, offering 2,500 sq ft of light and airy accommodation, ideal for family living, and set within a sunny garden

PROPERTY SUMMARY

3 White House Mews is an attractive attached family house with surprisingly spacious accommodation of 2,532 sq ft, arranged over three floors, set within a private gated mews of only three houses. Completed in 2020, the house has been built to an exacting standard in the Regency style at the rear, complimenting the original house that stood on the site for many years. There are four bedrooms, arranged over two floors, each with an en suite, and on the ground floor there are two reception rooms and a fine kitchen/dining room, with two sets of double doors leading out to an entertaining terrace and the sunny south backing garden. There is also a utility room and a cloakroom on this floor. Outside there is parking for three/four cars and a sunny rear garden.

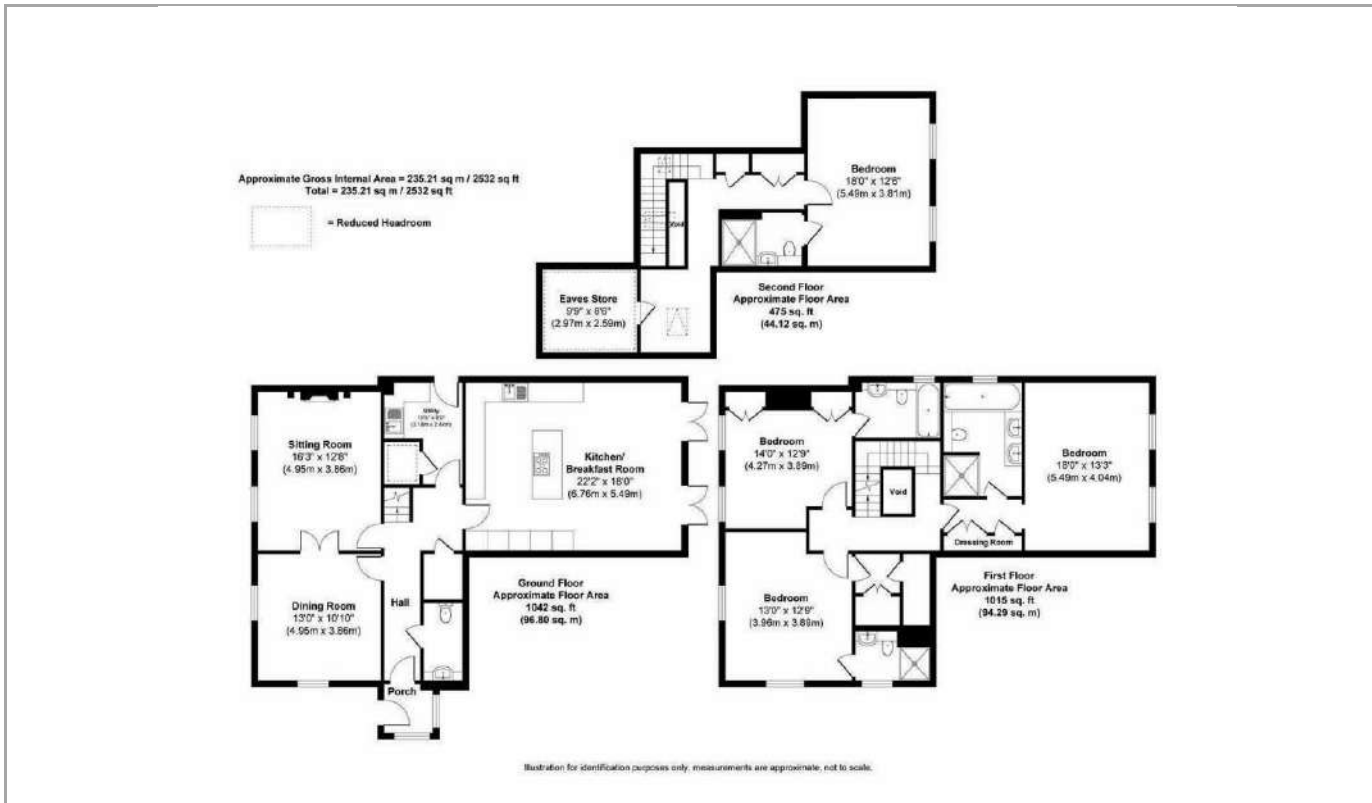
 4

 4

 2

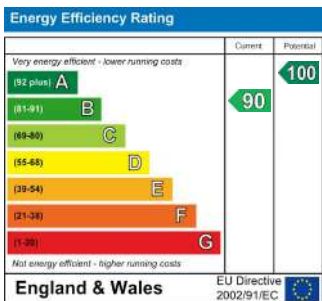






DIRECTIONS

From Guildford take the A320 Woking Road, passing under the A3 and carry on over three roundabouts. Continue past the turning to Moorfield Road (Slyfield Industrial Estate) and past the turning to Jacobs Well and take the first driveway on the right into White House Mews, where 3 will be found straight ahead of you.



TENURE
Freehold

VIEWINGS
By prior appointment only

LOCAL AUTHORITY
Guildford

COUNCIL TAX BAND
F

Agents Note: Whilst every care has been taken to prepare these particulars, they are for guidance purposes only. All measurements are approximate and are for general guidance purposes only and whilst every care has been taken to ensure their accuracy, they should not be relied upon and potential buyers/tenants are advised to recheck the measurements



OFFICE ADDRESS

6 Quarry Street
Guildford
Surrey
GU1 3UR

OFFICE DETAILS

01483 300300
info@hillclements.com
<https://hillclements.com/>